

KMEA All-State Excerpts

Viola

Year 3

Please Note:

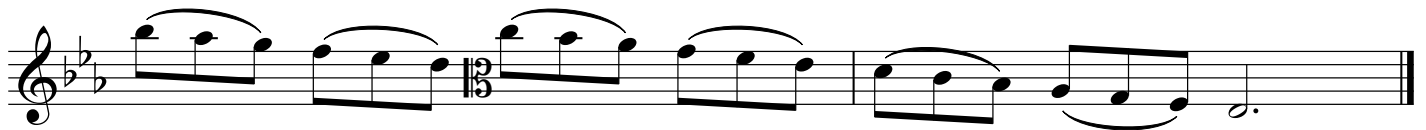
- 1) Perform the scales without Vibrato.
- 2) Perform the scales at the designated tempo.

While the excerpts list a range of recommended tempi, the metronome marking for the scales is an expectation, not merely a recommendation.

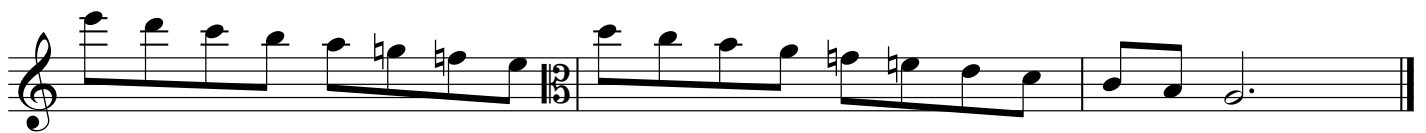
KMEA All-State Orchestra Excerpts

Viola - Year 3: E \flat major, a melodic minor

$\text{♩} = 60$



$\text{♩} = 60$



Roman Carnival Overture

H. Berlioz

♩ = 50-54

mf *espress.*

f

cresc. molto *f* *dim* *p* *mf*

Symphony No. 2

Mvmt III

J. Brahms

Presto, ma non assai (♩ = ♪)

♩ = 84-92

P leggiero

cresc. molto

f ben marc.

pp

p

Roumanian Rhapsody No. 1

G. Enesco

♩. = 54-60

Solo

The first staff of music is in 6/8 time and D major. It begins with a forte (*f*) dynamic and a *Solo* marking. The melody consists of eighth and sixteenth notes, with a series of slurs over the final two measures. A hairpin crescendo is shown below the staff.

The second staff continues the melody with slurs and accents. It features a forte (*sf*) dynamic marking and a hairpin crescendo below the staff. The piece concludes with a double bar line.

KMEA All-State Orchestra - Viola Year 3, Excerpt 3