

KMEA All-State Excerpts

Bass

Year 2

Please note:

- 1) Perform the scales without vibrato.
- 2) Perform the scales at the designated tempo.

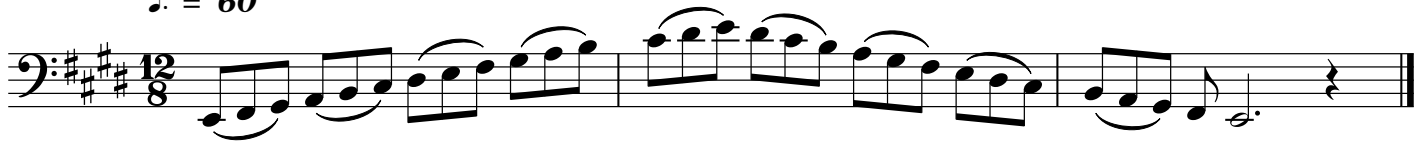
While the excerpts list a range of recommended tempi, the metronome marking for the scales is an expectation, not merely a recommendation.

KMEA All-State Orchestra Excerpts

Bass - Year 2: E major, g melodic minor

E major

♩ = 60



g melodic minor

♩ = 60



Orchestral Suite No. 3

3

Bass

in B minor

J.S. Bach

Double

1

4
Bass

Symphony No. 2 in D major, Op. 73

1st mvmt

J. Brahms

Allegro non Troppo ♩ = 108

1
f quasi ritenente sf ben marcato

6
sf marcato *f*

13
ff *poco f espr.*

21

29

36
pizz.
p